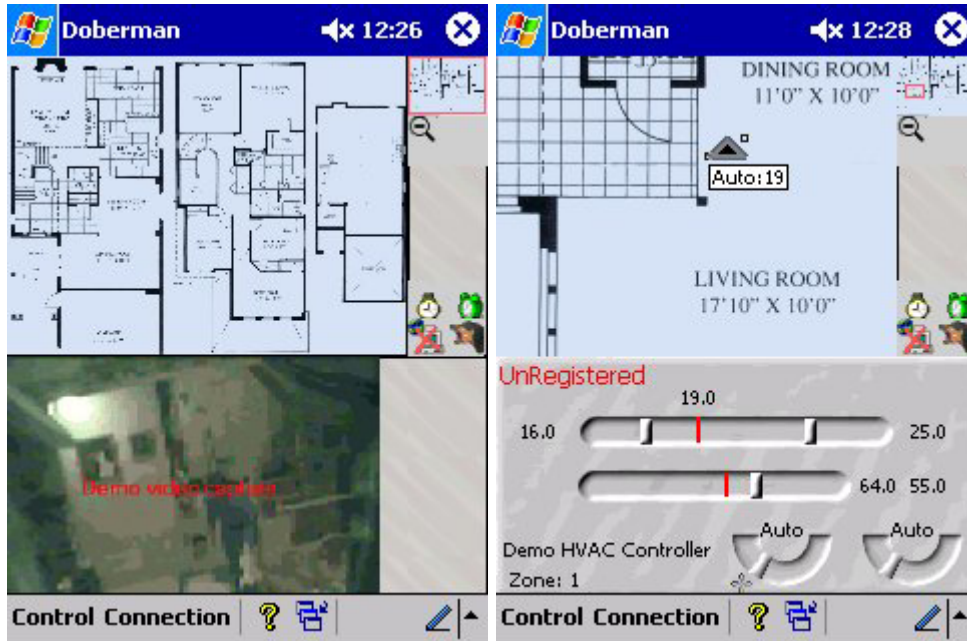


Welcome to Doberman BMS

PocketPC Edition.

Users Guide

<http://www.GoldenCrater.com/automation>



Requirements

- A PocketPC running Microsoft PocketPC OS 3.0, 2002 or 2003.
- Connection to Internet/LAN
- Golden Crater Software epAssist with the Doberman plugin installed and active.
- The epAssist server and Doberman client components are separate products and require separate registration.

Installing

- Connect your PocketPC to your computer using ActiveSync.
- Download and launch DobermanCE PocketPC.exe
- Follow the on-screen instructions.



Starting Doberman BMS

- Locate the Doberman icon  installed on your device.



Configuring

In the screen shots below, Web Access to your assistant shows a (fictitious) address of:

<http://42.43.124.18:87/~Alyter42/>

- Server Address is **42.43.124.18**
 - Server Port is **87**
 - Assistant Name is **Alyter42**
- Select the **Control** menu
 - Choose the **About Doberman..** item
 - When you purchased this product you were provided an **unlock code**, or one was sent via email. Enter the unlock code in the space provided.
 - Select **OK**.



- Select the **Tools** menu.
- Choose the **Configure** item.
- Enter an optional **Client Id**, this will be used in future versions to customize the interface based on the user.
- Enter your epAssist server external **IP address**.
 - If you are behind a firewall, you will need to locate the IP address from your firewall product.
- Enter the **server port** that epAssist was configured to handle.
- Provide the **name** of your epAssist assistant (case sensitive.)
- If you configured a **login name and password**, enter it in the space provided.



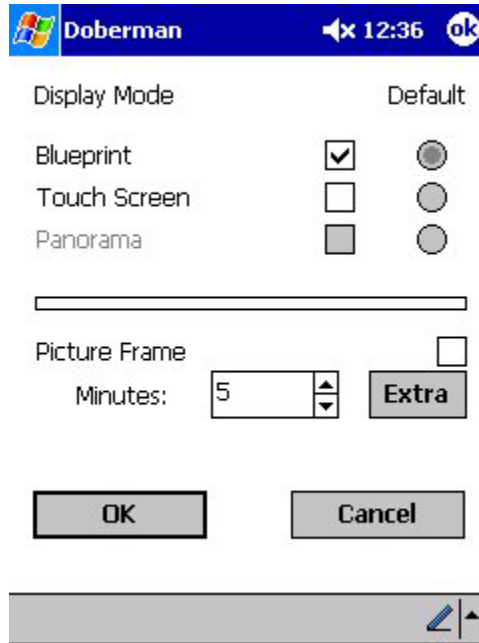
- Check **Update blueprints from server** to download the floorplan image from the server. This needs to be done only when the image changes.
- Choose **OK**

- Adjust the refresh rate and bandwidth usage through the **Bandwidth throttle**
- If your configuration includes a camera, enable the **Security video feed**
- Choose **OK**

- Be sure **Blueprint** is checked and **Touchscreen** is unchecked.



- If you used ActiveSync to copy a 240x320 Photo.png into the same directory as Doberman.exe (program files\Doberman\Photo.png on your PocketPC) then check the **Picture Frame** option.
 - Doberman WTL will use this image as a 'screen saver'
- Choose **OK**



Reconnecting to the server

- Choose the **Connection** menu.
- Choose **Connected**.



Logging off and securing the client

- Choose the **Control** menu.
- Choose **Exit**.



Checking the status of the sensors

The same status icons as the Doberman configuration tool are displayed in the clients.

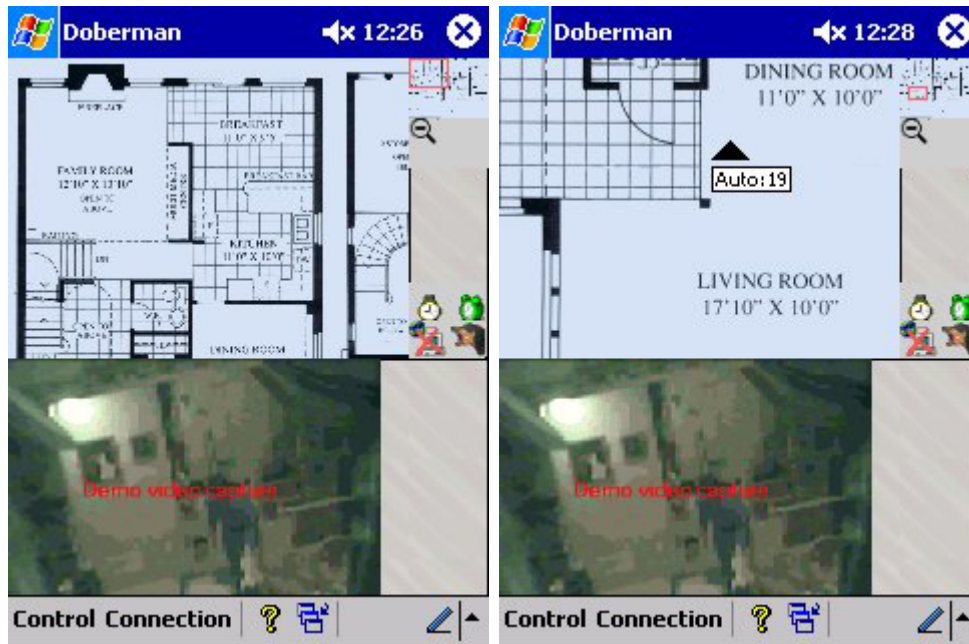


With the icons of a computer and a globe indicating the connection status.



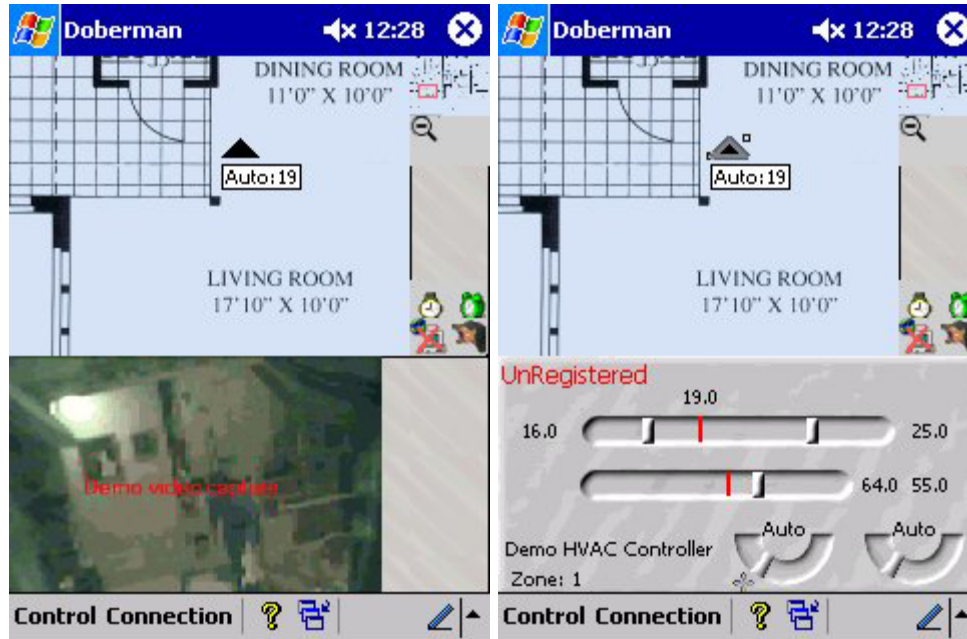
Viewing the status of devices on the floorplan

- Tap and drag on the floorplan screen to pan the image. –or–
- Tap and drag on the small overview floorplan (upper right)
- Tap the zoom icon (magnifying glass below the overview) to toggle the three levels of zoom.
- The pips show the current status as both text and color.



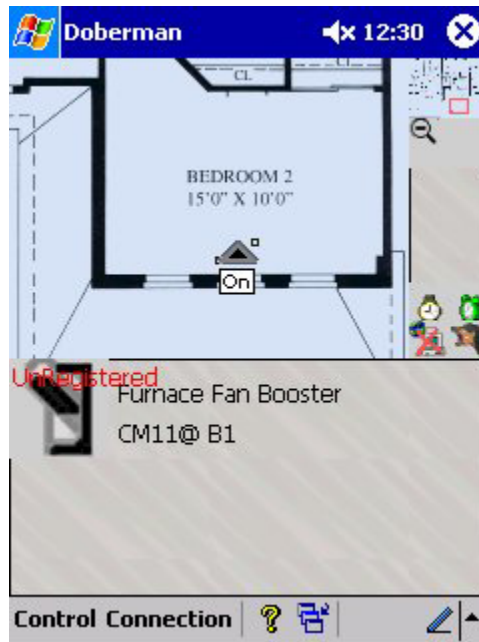
Controlling devices from the floorplan

- Tap on the device pip (triangle) to select
- The video window is replaced with the device control and details.



Controlling a light switch device

- Tap on the light switch icon to change states.
- The new state will be sent to the server.
- It may take several seconds for the server to control the device and update the client.
- For ease of control, the device properties will not update if the device state changes on the server while displayed.
- Tap on the floorplans dismiss and return to displaying the video.



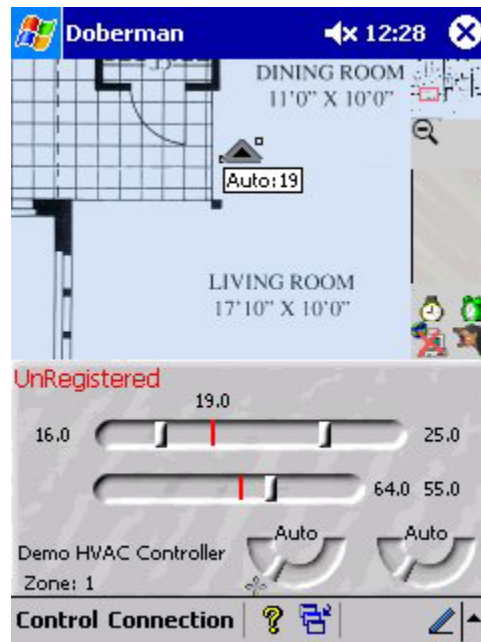
Controlling a Dimmable device

- Tap and drag the rotary dial to the desired brightness.
- Releasing the dial will send the new state to the server.
- It may take several seconds for the server to control the device and update the client.
- For ease of control, the device properties will not update if the device state changes on the server while displayed.
- Tap on the floorplans dismiss and return to displaying the video.



Controlling a HVAC (furnace, humidifier) device

- Tap and drag the slider you wish to control.
- The vertical red bar indicates the current sensed settings.
- Some controllers allow for automatic switching between heat and cool and allow independent settings for each.
- Release the slider to send the new state to the server.
- It may take several seconds for the server to control the device and update the client.
- For ease of control, the device properties will not update if the device state changes on the server while displayed.
- Depending on configuration at setup time, some controls may be disabled.
- In order:
 - Cool setting (shown as 16C.)
 - Heat setting (shown as 25C.)
 - Note: Current temperature is 19C.
 - Humidity setting (shown as 64%.)
 - Note: Current humidity is 55%.
 - Mode setting (off, auto, heat only, cool only.)
 - Fan setting (auto, on.)
- Tap on the floorplans dismiss and return to displaying the video.



Microsoft® Windows™ and other trademarks are the property of the respective trademark holders.

