

# Welcome to Doberman BMS

## Microsoft Smartphone Edition.

Users Guide

<http://www.GoldenCrater.com/automation>



## ***Requirements***

- A Smartphone running Microsoft Smartphone 2002 or 2003.
- Golden Crater Software epAssist with the Doberman plugin installed and active.
- The epAssist server and Doberman client components are separate products and require separate registration.

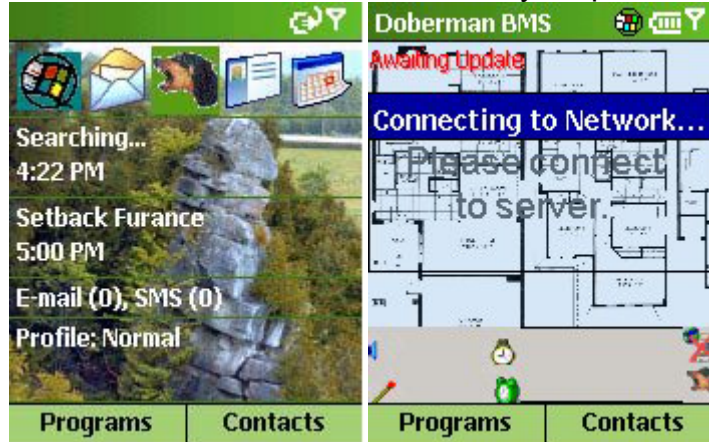
## ***Installing***

- Connect your Smartphone to your computer using ActiveSync.
- Download and launch Setup-DobermanBMS-SP.exe
- Follow the on-screen instructions.



## Starting Doberman BMS

- Locate the Doberman icon  installed on your phone.






## Configuring

In the screen shots below, Web Access to your assistant shows a (fictitious) address of:

<http://42.43.124.18:87/~Alyter42/>

- Server Address is **42.43.124.18**
  - Server Port is **87**
  - Assistant Name is **Alyter42**
- 
- Press the **Menu** soft button.
  - Choose the **Options** item.
  - Enter an optional **Client Id**, this will be used in future versions to customize the interface based on the user.
  - Enter your epAssist server external **IP address**.
    - If you are behind a firewall, you will need to locate the IP address from your firewall product.
  - Enter the **server port** that epAssist was configured to handle.
  - Provide the **name** of your epAssist assistant (case sensitive.)
  - If you configured a **login name and password**, enter it in the space provided.
  - Check **Download Floorplans** to download the floorplan image from the server. This needs to be done only when the image changes.
  - When you purchased this product you were provided an **unlock code**, or one was sent via email. Enter the unlock code in the space provided.
  - Select **Done**.

<p>Connection </p> <p>Client Id (opt.): <input type="text" value="my phone"/></p> <p>Server Address: <input type="text" value="42.43.124.18"/></p> <p>Server Port: <input type="text" value="87"/></p> <p>Assistant Name: <input type="text"/></p> <p><b>Done</b> <b>Cancel</b></p>	<p>Connection </p> <p>Server Port: <input type="text" value="87"/></p> <p>Assistant Name: <input type="text" value="Alyter42"/></p> <p>Login Name (if req.): <input type="text" value="jim"/></p> <p>Login Password (if req.): <input type="text" value="*****"/></p> <p><b>Done</b> <b>Cancel</b></p>	<p>Connection </p> <p>Login Name (if req.): <input type="text" value="jim"/></p> <p>Login Password (if req.): <input type="text" value="*****"/></p> <p><input type="checkbox"/> Download Floorplans</p> <p>Unlock Code: <input type="text" value="**"/></p> <p><b>Done</b> <b>Cancel</b></p>
--	---	--



## ***Reconnecting to the server***

- Choose the **Menu** soft button.
- Choose **Toggle Connection**.

## ***Logging off and securing the client***

- Choose the **Menu** soft button.
- Choose **Secure Client**.



## Checking the status of the sensors

The same status icons as the Doberman configuration tool are displayed in the clients.

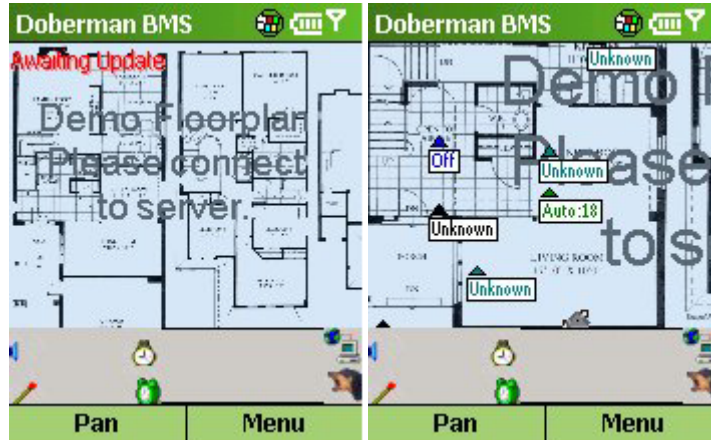


With the icons of a computer and a globe indicating the connection status.



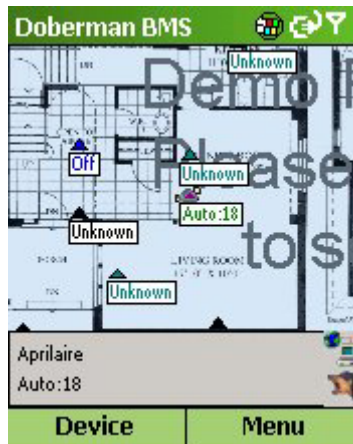
## Viewing the status of devices on the floorplan

- Press the left soft button until the text shows **Pan**.
- The direction keys (joystick) pans the image.
- The Action Button toggles the three levels of zoom.
- The pips show the current status as both text and color.



## ***Controlling devices from the floorplan***

- Press the left soft button until the text shows Device.
- The status icons are replaced with detailed device information.
- The current item has a grey highlight.
- Use the up/down direction keys (joystick) to switch between devices currently visible.
- Use the left/right direction keys (joystick) to jump to another device.
- The action button will bring up the device properties.



## ***Controlling a light switch device***

- Use the left/right direction keys (joystick) to select a state.
- The action button will send the new state to the server.
- It may take several seconds for the server to control the device and update the client.
- For ease of control, the device properties will not update if the device state changes on the server while displayed.
- Choose the **Done** soft button to dismiss.



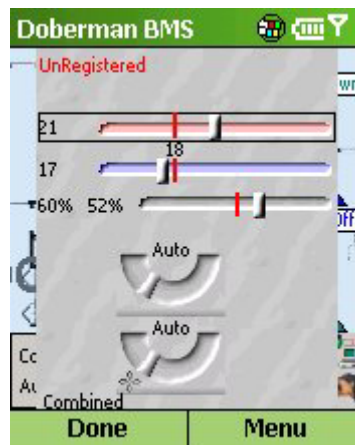
## Controlling a Dimmable device

- Use the left/right direction keys (joystick) to select the brightness.
- The number keys 1 through 9 correspond to 10% through 90%.
- The '\*' key selects 0% (off.)
- The '#' key selects 100% (full on.)
- The '0' key toggles between 0% and 100%.
- The action button will send the new state to the server.
- It may take several seconds for the server to control the device and update the client.
- For ease of control, the device properties will not update if the device state changes on the server while displayed.
- Choose the **Done** soft button to dismiss.



## Controlling a HVAC (furnace, humidifier) device

- Use the up/down direction keys (joystick) to select aspect you wish to control.
  - The highlight will indicate the aspect you are controlling.
- The vertical red bar indicates the current sensed settings.
- Some controllers allow for automatic switching between heat and cool and allow independent settings for each.
- Use the left/right direction keys (joystick) to select the setting.
- The action button will send the new state to the server.
- It may take several seconds for the server to control the device and update the client.
- For ease of control, the device properties will not update if the device state changes on the server while displayed.
- Depending on configuration at setup time, some controls may be disabled.
- In order:
  - Heat setting (shown as 21C.)
  - Cool setting (shown as 17C.)
    - Note: Current temperature is 18C.
  - Humidity setting (shown as 60%.)
    - Note: Current humidity is 52%.
  - Mode setting (off, auto, heat only, cool only.)
  - Fan setting (auto, on.)
- Choose the **Done** soft button to dismiss.



## ***Viewing the surveillance camera attached to the server***

- Choose the **Menu** soft button.
- Choose the Camera View option.
- While connecting, a blue connecting screen will be displayed.
- Once connected, the camera updates as frequently as possible and is limited by bandwidth and camera capture configuration.
- If the image is larger than the screen, it will be scaled to fit.
  - Press the action button to zoom in.
  - Use the direction keys (joystick) to pan around the image.
- Select the **Video** soft button to return to device/floorplan view.



Microsoft® Windows™ and other trademarks are the property of the respective trademark holders.

