

Using EDT i-LiNE with Doberman Security and Automation

© 2003-2004, Golden Crater Software <http://www.GoldenCrater.com/automation>

Trademarks are the property of the respective trademark holders.

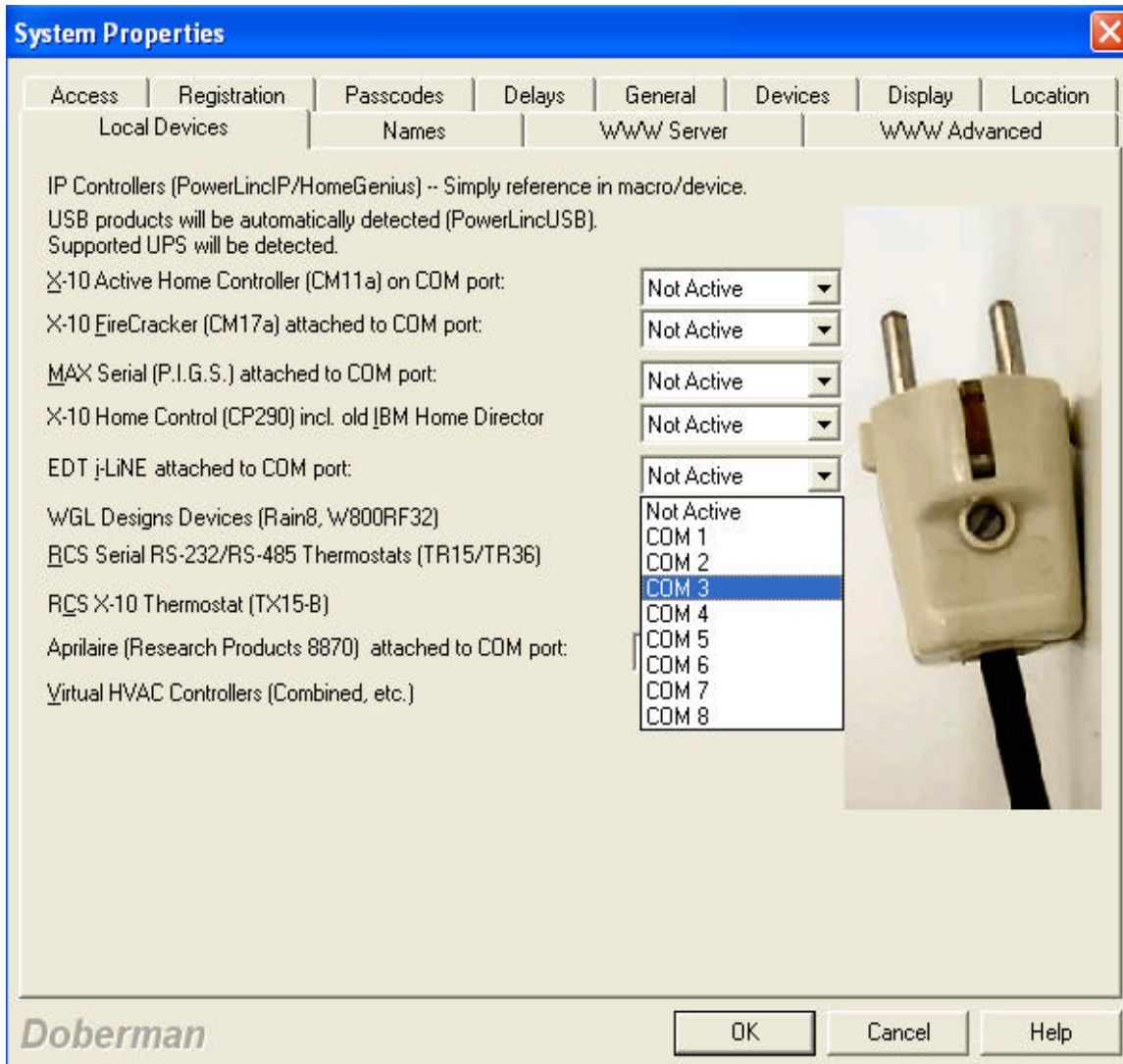
EDT i-LiNE is available at <http://www.edt.biz>



Golden Crater Software's Doberman Security and Automation (Doberman) system supports EDT i-LiNE automation devices.

These devices connect to your server computer running Doberman Security and Automation using a standard serial port. From the Devices tab, select the COM (serial) port that the i-PoWER M1 or i-PoWER M4 is connected. You will need to restart your server program in order for these devices to become active.





Addressing devices on the Doberman system is unique in that there is not a one-to-one relationship between device control (sending commands) and device triggers (receiving notification.) The Doberman system tries to make configuration as simple as possible, while realizing that there may be more complex situations than can be easily discovered.

The first time the server is run with i-LiNE support enabled, it will enter discovery mode. Any macros you wish to run within the i-LiNE system only, should be configured with EDT's setup tool before enabling support in Doberman. Upon completion of discovery mode, an i-LiNE.XML file will be written into the directory where Doberman is installed. If you wish to customize, update or correct the device layout, you may manually edit this XML file. This XML file contains



mappings between i-LiNE macros and devices. See example at the bottom of this document.

If you add, remove, reposition, or change macros or devices, you will need to either update the XML file manually, or simply delete the XML file to cause Doberman to enter discovery mode the next time it is launched.

Doberman can watch i-LiNE macros (by default, each device 'button' is assigned one macro entry) but must control the device. There is a maximum of 255 macros, but 255 devices can be installed on an EDT system, some of those devices can have up to 6 buttons. All addressing in Doberman is done via the macro number. The XML file holds the device to macro mappings.

As with any other device in Doberman, you must choose the address (LocalDbrServer) and the device type (EDT i-LiNE) and then the i-LiNE macro number, in groups of 16. For instance, macro 1 is "1-1" where macro 17 would be addressed as "2-1".

Select Device

1 7

LocalDbrServer EDT i-LiNE

Description:

iLine SW

Device Type:

Appliance

Text on left

OK

Cancel

The i-LiNE series includes a multi-button device, the i-ON-MB. Doberman does support multi-button devices in numeric sequence through the Button Keypad.



Select Device: 1 1

LocalDbrServer EDT i-LiNE

Description:
iLine BP

Device Type:
Button Keypad

Text on left

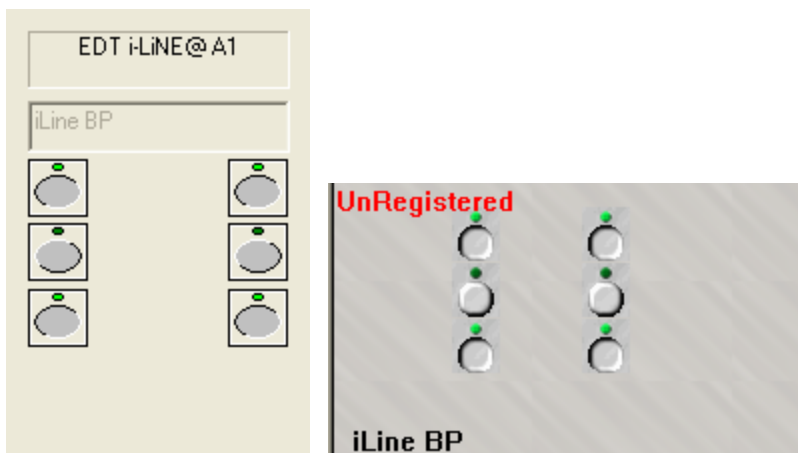
2x3 Buttons

OK

Cancel

The "Button Keypad" above chooses a 2x3 matrix of buttons (the same layout as i-LiNE) from macro 1 sequentially through 6.

When controlling the device through Doberman Security and Automation or Doberman BMS, you will see a controller similar to:



Dimmers and wall switches operate as any other Doberman device.



Sample Configuration

Taking a new i-LiNE system from the box that includes one each, i-ON-MB (multi button), i-ON (wall switch), i-ON-D (dimmer), and installing them in that order.

Without any configuration through EDT's configuration tool, Doberman will see and control:

The i-ON-MB at:

1-1, 1-2, 1-3, 1-4, 1-5, 1-6

Or choose 1-1 for a 2x3 Button Keypad

The i-ON at:

1-7

The i-ON-D at:

1-8



Sample i-LiNE.XML file

For the configuration above.

```
<iLine>
  <Macro ID="1">
    <Node>1</Node>
    <Object>1</Object>
  </Macro>
  <Macro ID="2">
    <Node>1</Node>
    <Object>2</Object>
  </Macro>
  <Macro ID="3">
    <Node>1</Node>
    <Object>3</Object>
  </Macro>
  <Macro ID="4">
    <Node>1</Node>
    <Object>4</Object>
  </Macro>
  <Macro ID="5">
    <Node>1</Node>
    <Object>5</Object>
  </Macro>
  <Macro ID="6">
    <Node>1</Node>
    <Object>6</Object>
  </Macro>
  <Macro ID="7">
    <Node>2</Node>
    <Object>1</Object>
  </Macro>
  <Macro ID="8">
    <Node>3</Node>
    <Object>1</Object>
  </Macro>
</iLine>
```

Please note: No comments or extra formatting is advised in the XML file.

